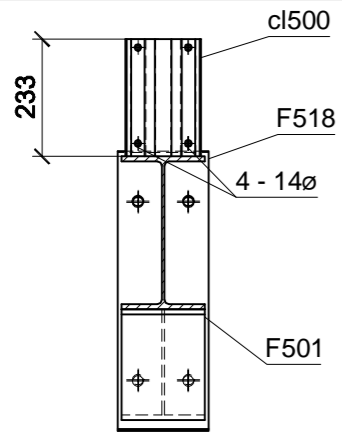
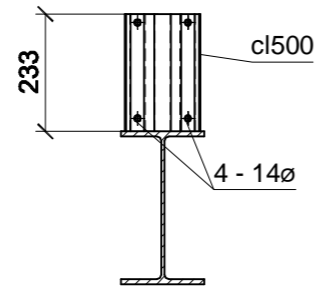


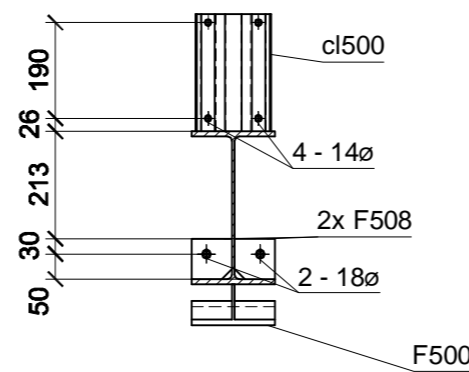
A3



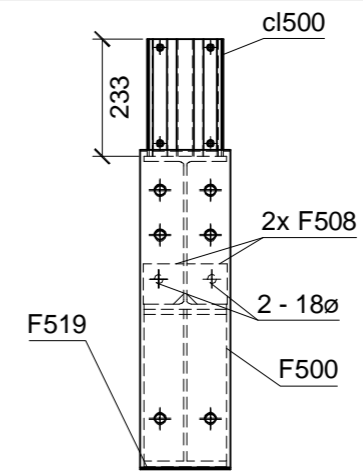
Section A - A



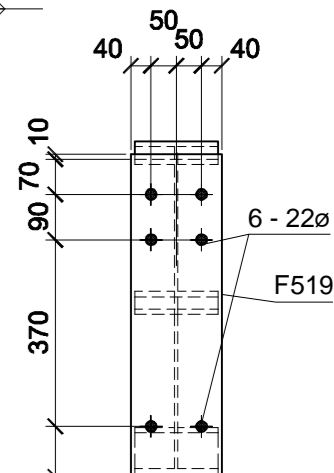
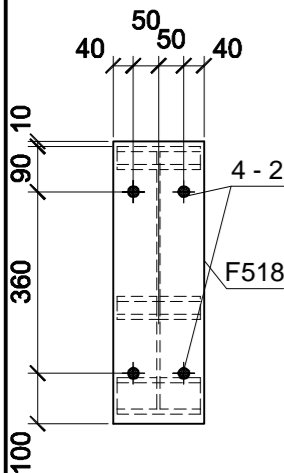
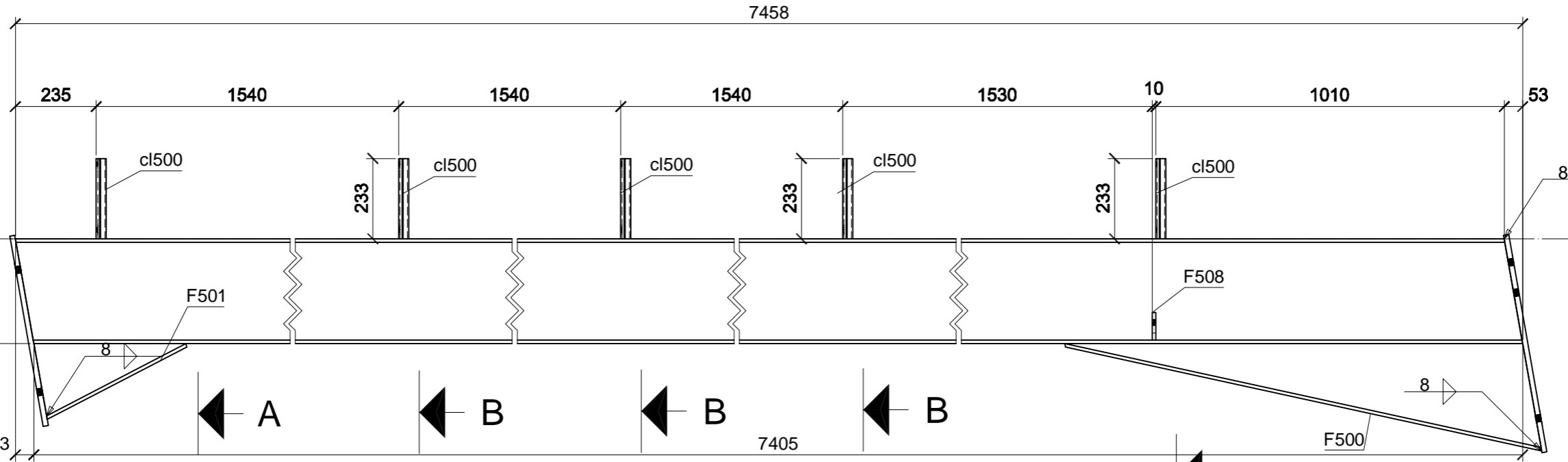
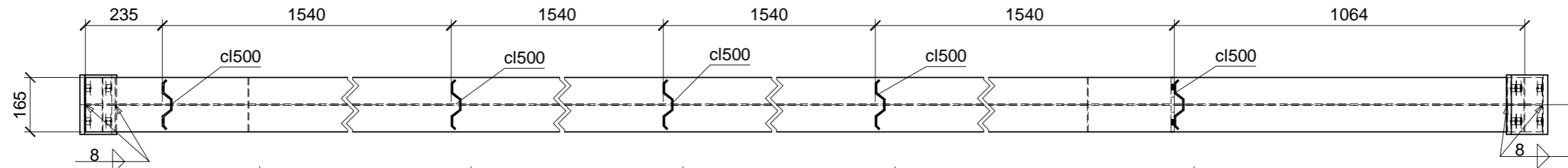
Section B - B



Section C - C



Section D - D



Mark	Quantity	Profile	Length	Material	Area (m <sup>2</sup> )	Weight (kg)
R1	4	Values for ONE assembly:				
M500	1	UB305x165x40	7,458	S275JR	9.36	298.6
F500	1	UB305x165x40	1,417	S275JR	1.78	28.5
F519	1	FL180x15	640	S275JR	0.26	13.6
F518	1	FL180x15	560	S275JR	0.22	11.9
F501	1	UB305x165x40	459	S275JR	0.58	8.3
cl500	5	KING CD23	233	Cold Rolled	0.00	1.3
F508	2	FL80x10	80	S275JR	0.02	0.5
<b>Total for ONE assembly:</b>					<b>12.22</b>	<b>368.2</b>

4 No. UB305x165x40 - S275JR - Mkd R1

General Notes

- All welds continuous 6mm fillet U.N.O.
- This drawing must not be scaled.

Index	Date	Description	Author
		CONTRACT	
107 Comber Road Killinchy Newtownards Co Down BT23 6PF www.tate-engineering.co.uk info@tate-engineering.co.uk		Example Rafter Fabrication DWG	
DRAWN BY	DATE	SCALE	JOB No.
ST	09.08.04	1:15	HS5002
		DRG No.	Rev.
		[A] - R1	